

LIGHTNING ASSEMBLY INSTRUCTIONS



Kit includes: carry bag, top rail, bottom rail/stabilizing foot and bungee pole.



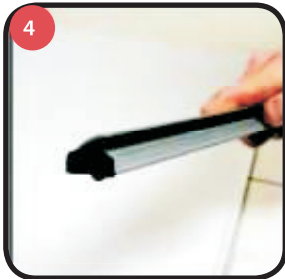
1 Open up the hinged edge on the bottom rail.



2 Insert the bottom of the graphic into the bottom rail, sliding it through the narrow opening



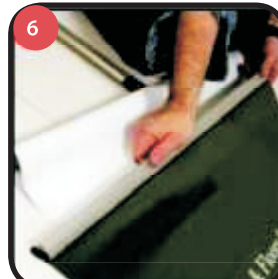
3 When the graphic is inserted, snap shut the hinged edge to secure the ft.



4 Open up the hinged edge on the top rail.



5 Slide the graphic between the hinged edge and the rail through the narrow opening. Snap shut to secure.



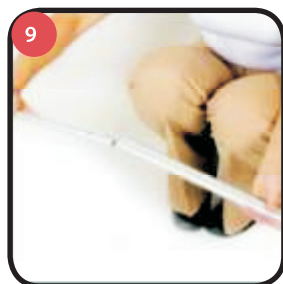
6 Ensure the graphic is pushed securely in all the way along the rail.



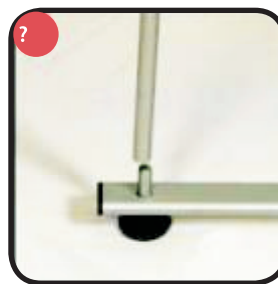
7 Open up the stabilizing foot on the bottom rail.



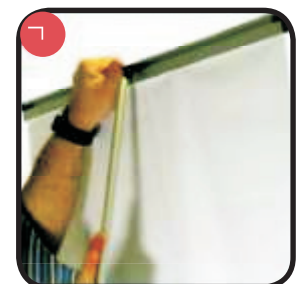
8 Secure the stabilizing foot at 90° to the bottom rail by tightening the screw fitting.



9 Open up the bungee pole and connect the 3 parts together.



10 Slot bottom of the bungee pole onto the foot.



11 Finally, bend the bungee pole forward slightly and fit to the top rail..

Repeat steps in reverse to retract and Store